

Chapter 7

Ear, Nose, and Throat

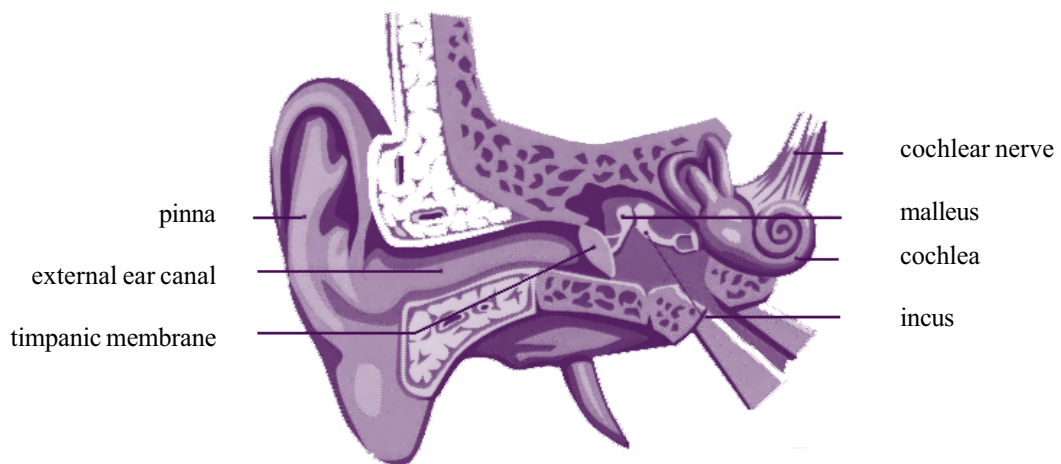
Impairment

This chapter contains two parts:

- Part 7.1 — Hearing Loss and Tinnitus
- Part 7.2 — Ear, Nose, and Throat

PART 7.1: HEARING LOSS AND TINNITUS

Because it causes a single loss of function, accepted hearing loss is to be assessed as if it were a single condition even if the loss is described under several diagnostic terms. For example, a veteran who has accepted conditions of both “right conductive deafness” and “left conductive deafness” will have them rated as if the conditions had been described as “bilateral conductive deafness”.



Only a single impairment rating may be made from Part 7.1 for accepted hearing loss irrespective of how many diagnostic terms have been used in describing the hearing loss.

However, a second impairment rating may be made from Part 7.1 (Table 7.1.11) for tinnitus if appropriate.

Definitions

For the purposes of this chapter:

- “Air Conduction”** is the manner in which sound transmitted through the air reaches the inner ear in the normal way.
- “APHL” or “Accepted Percentage Hearing Loss”** is the percentage of total hearing that the veteran has lost due to accepted deafness. It is found by summing the losses at each of 6 important frequencies.
- “Bone conduction”** is the manner in which sound is heard when the source of sound is placed directly over any bony part of the hearer’s cranium. In such a case the sound is conducted to the inner ear through the bones of the skull.
- “HTL” or “Hearing Threshold Level”** is, for any given frequency, the volume (loudness) of the faintest sound that the veteran can hear. For each frequency, there will be a hearing threshold level for the right ear and a hearing threshold level for the left ear. Hearing threshold levels can be determined using either bone or air conduction information.
- “Presbycusis”** is the normal loss of hearing which accompanies ageing.
- “TBHL” or “Total Bilateral Hearing Loss”** is the percentage of total hearing which the veteran has lost from all conditions whether accepted or not.

Calculation of the impairment rating for accepted hearing loss

Follow the steps below to calculate the accepted hearing loss.

(Each of these steps is elaborated in the following pages.)

STEP 1	Apply Table 7.1.1 to determine the type of accepted hearing loss.	Page 130
STEP 2	Determine whether the audiogram is reliable and suitable for hearing loss calculations.	Page 131
STEP 3	Calculate the APHL.	Page 132
STEP 4	Determine what age adjustment (if any) must be subtracted from the APHL. Subtract it.	Page 145
STEP 5	Determine the functional impairment rating by applying Formula 7.1. If the paired organs policy does not apply, this will be the final impairment rating for loss of hearing.	Page 147
STEP 6	Determine if the paired organs policy applies by applying Table 7.1.10. If the policy applies, calculate the adjusted impairment rating.	Page 148

Hearing Worksheets

A set of Hearing Worksheets, at the end of this chapter (pages 152 to 157), is designed to facilitate the calculation of impairment due to accepted hearing loss. When performing a hearing loss assessment, the assessor should use the appropriate worksheet.

These worksheets may also be of assistance in gaining an understanding of the procedures set out in this chapter.

Step 1: Use Table 7.1.1 to determine the type of accepted hearing loss.

For the purpose of assessment, every type of accepted hearing loss is considered to consist of one or more of the following four components:

- ◆ right sensorineural deafness;
- ◆ left sensorineural deafness;
- ◆ right conductive deafness; and
- ◆ left conductive deafness.

Fifteen different types of accepted hearing loss are recognised. Each consists of one or more of the above four components. The 15 types of possible accepted hearing loss are listed in Table 7.1.1 below. Every accepted hearing loss or combination of hearing losses will be found to be equivalent to one of the types of hearing loss listed in Table 7.1.1.

**Procedural
Table 7.1.1**



TYPES OF ACCEPTED HEARING LOSS

Type 1	Bilateral mixed deafness
Type 2	Right mixed deafness
Type 3	Left mixed deafness
Type 4	Bilateral sensorineural deafness with right conductive deafness
Type 5	Bilateral sensorineural deafness with left conductive deafness
Type 6	Bilateral conductive deafness with right sensorineural deafness
Type 7	Bilateral conductive deafness with left sensorineural deafness
Type 8	Bilateral sensorineural deafness with right conductive deafness
Type 9	Bilateral sensorineural deafness with left conductive deafness
Type 10	L deafness
Type 11	R deafness
Type 12	Right conductive deafness
Type 13	Right sensorineural deafness
Type 14	Left sensorineural deafness
Type 15	Left conductive deafness

A single selection to cover the veteran's accepted hearing loss is to be made from this table, ignoring the non-accepted hearing losses at this stage.

No age adjustment permitted for this table

Step 2: Determine whether the audiogram is reliable and suitable for hearing loss calculations.

The audiogram

Assessment of hearing impairment requires a pure tone audiogram. *For the purposes of assessment of impairment, hearing loss is to be measured without the benefit of any hearing aid.* Measurements of the hearing threshold level (HTL) should be taken at each of the following frequencies:

500 Hz, 1000 Hz, 1500 Hz, 2000 Hz, 3000 Hz, and 4000 Hz

Ideally, the audiogram should include both air conduction HTLs and masked bone conduction HTLs at each of these frequencies.

The four criteria for a reliable audiogram

1. *The date of the audiogram must be appropriate to the period of assessment.* The audiogram should not be more than six months older than the relevant time in the assessment period to which the information is to be applied. If there is a specific assertion that the veteran's hearing has deteriorated within the last six months, then the audiogram should not be more than six weeks old at the time of assessment.

2. *The frequencies tested should be appropriate.* Measurements of HTL should be available for each of the frequencies mentioned above (that is, 500 Hz, 1000 Hz, 1500 Hz, 2000 Hz, 3000 Hz, and 4000 Hz).

If HTL measurements are missing at one or two frequencies, the missing values can be estimated (interpolation) by inspection of the audiogram, by applying knowledge of the type of hearing loss, and by examination of other audiograms. If the nature and extent of missing information in an audiogram are considered to be such that interpolation would not be sufficiently accurate, the audiogram should be repeated. If the deficient audiogram is recent, the new audiogram is to be used in its place. The new audiogram may also be used to assist in interpolation of an older, deficient audiogram.

3. *Bone conduction HTLs should be available when necessary.* An audiogram showing both *bone conduction* and *air conduction* HTLs should be used for the assessment of all types of accepted hearing loss *unless* the total accepted hearing loss is equivalent to:

- ◆ Bilateral mixed deafness;
- ◆ Right mixed deafness;
- ◆ Left mixed deafness;
- ◆ Bilateral conductive deafness with right sensorineural deafness; or
- ◆ Bilateral conductive deafness with left sensorineural deafness,

for each of which only air conduction HTLs are required; or unless it is not practicable or appropriate to obtain bone conduction HTL values.

Reasons why it may not be practicable or appropriate to obtain bone conduction HTL values include the following:

- ◆ the veteran cannot reasonably attend a clinic where bone conduction HTL values can be measured;
- ◆ the veteran's other conditions are of such a degree that it will make no appreciable difference to the final assessment; or
- ◆ an ENT specialist or an audiologist has reported that:
 - no air-bone gap is present;
 - no conductive hearing loss is present; or
 - Rin  e's test is positive.

In such circumstances only air conduction HTLs need to be obtained.

4. *The nature of the audiogram should be appropriate.*

The nature (that is, general shape) of the audiogram should be consistent with the known hearing loss affecting the veteran and should also be consistent with other information (eg old audiograms) concerning the veteran.

If the nature of the audiogram is not appropriate, the audiogram should be repeated or the veteran referred to an ENT specialist to clarify the situation.

Step 3: Calculate the APHL.

There are six scales labelled 7.1.3 to 7.1.8. Each scale corresponds to a different frequency of sound. Table 7.1.3 relates to 500 Hz, Table 7.1.4 relates to 1000 Hz, Table 7.1.5 relates to 1500 Hz, and so on according to their labels.

Look up HTLs for 500Hz in Table 7.1.3 to give the loss at 500 Hz

Look up HTLs for 1000Hz in Table 7.1.4 to give the loss at 1000 Hz

Look up HTLs for 1500Hz in Table 7.1.5 to give the loss at 1500 Hz

Look up HTLs for 2000Hz in Table 7.1.6 to give the loss at 2000 Hz

Look up HTLs for 3000Hz in Table 7.1.7 to give the loss at 3000 Hz

Look up HTLs for 4000Hz in Table 7.1.8 to give the loss at 4000 Hz

This process gives rise to six frequency-specific losses. These six frequency-specific losses are summed to give the APHL for the relevant type of accepted deafness.

The calculations are best set out in a tabular form as below:

Accepted Hearing Loss

FREQ (Hz)	Hearing Levels (dB)		Loss (%)
	Right	Left	
500			
1000			
1500			
2000			
3000			
4000			

APHL =

The figures to be entered in the columns headed “Right” and “Left” will be obtained from the audiogram.

The figures to be entered in the column headed “Loss (%)” are to be obtained by applying Tables 7.1.3 to 7.1.8. (A different scale is used for each row of the calculation.)

The figures in the column headed “Loss (%)” are then to be added up to give the APHL.

The Accepted Percentage Hearing Loss for different types of deafness can be calculated by using air conduction, bone conduction, various combinations of the two or a special formula. The relevant rules are summarised in Table 7.1.2 and in the text which follows it. (The “types” mentioned in Table 7.1.2 refer to the combination of hearing losses as described in the preceding text and not necessarily to named accepted conditions.)

Table 7.1.2 sets out which HTLs (air or bone) from the audiogram are to be used in calculating APHL.

**Procedural
Table 7.1.2****TYPES OF AUDIOGRAM TO BE USED**

		For Right HTL use:	For Left HTL use:
Type 1	Bilateral mixed deafness	Air	Air
Type 2	Right mixed deafness	Air	0 (zeros)
Type 3	Left mixed deafness	0 (zeros)	Air
Type 4	Bilateral sensorineural deafness	Bone	Bone
Type 5	Bilateral sensorineural deafness with right conductive deafness	Air	Bone
Type 6	Bilateral sensorineural deafness with left conductive deafness	Bone	Air
Type 7	Bilateral conductive deafness	See Substep 3A	
Type 8	Bilateral conductive deafness with right sensorineural deafness	Air	Air
Type 9	Bilateral conductive deafness with left sensorineural deafness	Air	Air
Type 10	Left conductive deafness with right sensorineural deafness	Bone	Air
Type 11	Right conductive deafness with left sensorineural deafness	Air	Bone
Type 12	Right conductive deafness	See Substep 3A	
Type 13	Right sensorineural deafness	Bone	0 (zeros)
Type 14	Left sensorineural deafness	0 (zeros)	Bone
Type 15	Left conductive deafness	See Substep 3A	

Information and instructions concerning the use of bone HTLs are to be found on the next page, and apply in all cases where "Bone" appears in this table or in which reference is made to Substep 3A.

**No age adjustment
permitted for
this table**

Information and instructions concerning the use of bone HTLs

1. Whenever the use of bone conduction HTL values is specified but if it is not practicable or appropriate to obtain bone conduction HTL values as a result of any of the reasons described on page 132, air conduction HTL values may be used instead.
2. Threshold of Reliability.

Bone conduction HTLs in excess of 60 deciBels are generally unreliable. At the 500 Hz frequency, bone conduction HTLs in excess of 45 deciBels are unreliable.

Thus a set of *thresholds of reliability for bone HTLs* is defined as follows:

for 500 Hz	45 deciBels
for 1000 Hz	60 deciBels
for 1500 Hz	60 deciBels
for 2000 Hz	60 deciBels
for 3000 Hz	60 deciBels
for 4000 Hz	60 deciBels

Figures in excess of the threshold of reliability for bone conduction are not used in calculating the impairment due to hearing loss.

For sensorineural hearing loss, whenever the bone conduction HTL exceeds the threshold of reliability, the air conduction HTL for that frequency and side is to be used instead of the bone conduction HTL.

For conductive hearing loss, whenever the bone conduction HTL exceeds the threshold of reliability, the threshold figure for that frequency and side is to be used instead of the bone conduction HTL.

The above arrangement gives to the veteran the benefit of any doubt relating to the intrinsic unreliability of bone HTLs.

Substep 3A: Calculation of accepted hearing loss for types 7, 12, and 15.

Substep 3A applies to these types of accepted hearing loss:

- ◆ Type 7 Bilateral Conductive deafness
- ◆ Type 12 Right Conductive deafness
- ◆ Type 15 Left Conductive deafness.

For each type, one of two methods is to be used:

Method 1 is to be applied if both air and bone conduction HTLs are available. In this case both the air and bone conduction HTLs are calculated and a formula is applied. In calculating the bone conduction HTL, if the bone conduction HTL exceeds the threshold of reliability, the threshold figure for that frequency and side is to be used instead of the bone conduction HTL.

The terms “air conduction PLH (Percentage Loss of Hearing)” and “bone conduction PLH” are used in the formulas. These are calculated in a way similar to that in which APHL is calculated for other types of deafness.

Method 2 is to be applied if only air conduction HTLs are available and if it is not practicable or appropriate to obtain bone conduction HTL values as a result of any of the reasons described on page 132.

Type 7. Bilateral conductive deafness

Method 1 (to be applied if both air and bone conduction HTLs are available):

First:

Air Conduction PLH is to be calculated using right and left air conduction HTL values, and

Bone Conduction PLH is to be calculated using right and left bone conduction HTL values.

Next:

Using the air conduction and bone conduction PLHs, the PLH for bilateral conductive deafness is calculated by applying the following formula:

$$\text{Conductive PLH} = \frac{(A - B) \times 100}{100 - B}$$

(where “A” is air conduction PLH, and “B” is bone conduction PLH).

No adjustment for age is to be applied to the results of applying the formula. That result is the age adjusted PLH for bilateral conductive deafness.

Go to ⇒ Step 5 (on page 147).

Method 2 (to be applied if only air conduction HTLs are available and if it is not practicable or appropriate to obtain bone conduction HTL values as a result of any of the reasons described on page 132).

PLH is to be calculated using measured right and left air conduction HTL values. The formula is not applied and so age adjustment *is* required.

Go to ⇒ Step 4 (on page 145).

Type 12. Right conductive deafness

Method 1 (to be applied if both air and bone conduction HTLs are available):

First:

Air Conduction PLH is to be calculated using right air conduction HTL values and taking the left air conduction HTL values all to be zero; *and*

Bone Conduction PLH is to be calculated using right bone conduction HTL values and taking the left bone conduction HTL values all to be zero.

Next:

Using the air conduction and bone conduction PLHs, the PLH for right conductive deafness is calculated by applying the following formula:

$$\text{Conductive PLH} = \frac{(A - B) \times 100}{100 - B}$$

(where “A” is air conduction PLH, and “B” is bone conduction PLH).

No adjustment for age is to be applied to the results of applying the formula. That result is the age adjusted PLH for right conductive deafness.

Go to ⇒ Step 5 (on page 147).

Method 2 (to be applied if only air conduction HTLs are available and if it is not practicable or appropriate to obtain bone conduction HTL values as a result of any of the reasons described on page 132).

PLH is to be calculated using right air conduction HTL values and taking the left air conduction HTL values all to be zero. The formula is not applied and so age adjustment is required.

Go to ⇒ Step 4 (on page 145).

Type 15. Left conductive deafness

Method 1 (to be applied if both air and bone conduction HTLs are available):

First:

Air Conduction PLH is to be calculated using left air conduction HTL values and taking the right air conduction HTL values all to be zero; *and*

Bone Conduction PLH is to be calculated using left bone conduction HTL values and taking the right bone conduction HTL values all to be zero.

Next:

Using the air conduction and bone conduction PLHs, the PLH for right conductive deafness is calculated applying the following formula:

$$\text{Conductive PLH} = \frac{(A - B) \times 100}{100 - B}$$

(where “A” is air conduction PLH, and “B” is bone conduction PLH).

No adjustment for age is to be applied to the results of applying the formula. That result is the age adjusted PLH for left conductive deafness.

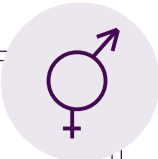
Go to ⇒ Step 5 (on page 147).

Method 2 (to be applied if only air conduction HTLs are available and if it is not practicable or appropriate to obtain bone conduction HTL values as a result of any of the reasons described on page 132).

PLH is to be calculated using left air conduction HTL values and taking the right air conduction HTL values all to be zero. The formula is not applied and so age adjustment is required.

Go to ⇒ Step 4 (on page 145).

**Scale 7.1.3
500 Hz**



Values of percentage of loss of hearing corresponding to given hearing threshold levels in the better and worse ear at 500 Hz

		HTL — Better ear																
		≤15	20	25	30	35	40	45	50	55	60	65	70	75	80	85	90	≥95
HTL - Worse ear	≤15	0.0																
	20	0.4	0.6															
	25	0.6	1.0	1.4														
	30	1.0	1.4	2.0	2.8													
	35	1.3	1.8	2.5	3.4	4.5												
	40	1.7	2.2	3.0	3.9	5.1	6.4											
	45	2.0	2.6	3.4	4.3	5.5	6.8	8.1										
	50	2.3	2.9	3.7	4.7	5.8	7.1	8.4	9.7									
	55	2.5	3.2	4.0	5.0	6.1	7.3	8.6	9.9	11.2								
	60	2.7	3.4	4.2	5.2	6.3	7.5	8.8	10.0	11.3	12.6							
	65	2.8	3.5	4.4	5.4	6.5	7.7	8.9	10.2	11.5	12.7	14.0						
	70	2.9	3.7	4.5	5.5	6.6	7.8	9.1	10.3	11.6	12.9	14.2	15.5					
	75	3.0	3.8	4.7	5.7	6.8	8.0	9.2	10.5	11.8	13.1	14.5	15.7	16.9				
	80	3.1	3.9	4.8	5.8	6.9	8.1	9.3	10.6	12.0	13.3	14.7	16.0	17.2	18.2			
	85	3.2	4.0	4.9	5.9	7.0	8.2	9.4	10.7	12.1	13.5	14.9	16.2	17.4	18.4	19.1		
	90	3.4	4.1	5.0	6.0	7.1	8.3	9.5	10.8	12.2	13.6	15.0	16.3	17.6	18.5	19.2	19.7	
	≥95	3.4	4.2	5.1	6.1	7.1	8.3	9.5	10.8	12.2	13.6	15.0	16.4	17.6	18.6	19.3	19.7	20.0
		≤15	20	25	30	35	40	45	50	55	60	65	70	75	80	85	90	≥95

Note: the worse ear is the one with the higher value HTL!

APHL may be age adjusted

Scale 7.1.4
1000 Hz



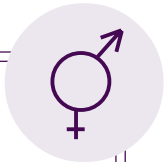
Values of percentage of loss of hearing corresponding to given hearing threshold levels in the better and worse ear at 1000 Hz

		HTL — Better ear																		
		≤15	20	25	30	35	40	45	50	55	60	65	70	75	80	85	90	≥95		
HTL - Worse ear	≤15	0.0																		
	20	0.5	0.8																	
	25	0.8	1.2	1.8																
	30	1.2	1.7	2.5	3.5															
	35	1.7	2.3	3.1	4.3	5.7														
	40	2.1	2.8	3.7	4.9	6.3	8.0													
	45	2.5	3.3	4.2	5.4	6.9	8.5	10.2												
	50	2.8	3.6	4.7	5.9	7.3	8.8	10.5	12.1											
	55	3.1	3.9	5.0	6.2	7.6	9.1	10.7	12.4	14.0										
	60	3.3	4.2	5.3	6.5	7.9	9.4	11.0	12.6	14.2	15.7									
	65	3.5	4.4	5.5	6.7	8.1	9.6	11.2	12.8	14.4	15.9	17.5								
	70	3.7	4.6	5.7	6.9	8.3	9.8	11.3	12.9	14.6	16.2	17.8	19.4							
	75	3.8	4.7	5.8	7.1	8.5	10.0	11.5	13.1	14.8	16.4	18.1	19.7	21.1						
	80	3.9	4.9	6.0	7.3	8.6	10.1	11.7	13.3	15.0	16.7	18.4	20.0	21.5	22.7					
	85	4.1	5.0	6.2	7.4	8.8	10.3	11.8	13.4	15.1	16.9	18.6	20.3	21.7	23.0	23.9				
	90	4.2	5.2	6.3	7.5	8.9	10.3	11.9	13.5	15.2	17.0	18.7	20.4	21.9	23.2	24.1	24.6			
	≥95	4.3	5.3	6.4	7.6	8.9	10.3	11.9	13.5	15.2	17.0	18.7	20.5	22.0	23.3	24.2	24.7	25.0		

Note: the worse ear is the one with the higher value HTL!

APHL may be age adjusted

**Scale 7.1.5
1500 Hz**



Values of percentage of loss of hearing corresponding to given hearing threshold levels in the better and worse ear at 1500 Hz

		HTL — Better ear																	
		≤15	20	25	30	35	40	45	50	55	60	65	70	75	80	85	90	≥95	
HTL - Worse ear	≤15	0.0																	
	20	0.4	0.6																
	25	0.6	1.0	1.4															
	30	1.0	1.4	2.0	2.8														
	35	1.3	1.8	2.5	3.4	4.5													
	40	1.7	2.2	3.0	3.9	5.1	6.4												
	45	2.0	2.6	3.4	4.3	5.5	6.8	8.1											
	50	2.3	2.9	3.7	4.7	5.8	7.1	8.4	9.7										
	55	2.5	3.2	4.0	5.0	6.1	7.3	8.6	9.9	11.2									
	60	2.7	3.4	4.2	5.2	6.3	7.5	8.8	10.0	11.3	12.6								
	65	2.8	3.5	4.4	5.4	6.5	7.7	8.9	10.2	11.5	12.7	14.0							
	70	2.9	3.7	4.5	5.5	6.6	7.8	9.1	10.3	11.6	12.9	14.2	15.5						
	75	3.0	3.8	4.7	5.7	6.8	8.0	9.2	10.5	11.8	13.1	14.5	15.7	16.9					
	80	3.1	3.9	4.8	5.8	6.9	8.1	9.3	10.6	12.0	13.3	14.7	16.0	17.2	18.2				
	85	3.2	4.0	4.9	5.9	7.0	8.2	9.4	10.7	12.1	13.5	14.9	16.2	17.4	18.4	19.1			
	90	3.4	4.1	5.0	6.0	7.1	8.3	9.5	10.8	12.2	13.6	15.0	16.3	17.6	18.5	19.2	19.7		
≥95	3.4	4.2	5.1	6.1	7.1	8.3	9.5	10.8	12.2	13.6	15.0	16.4	17.6	18.6	19.3	19.7	20.0		

Note: the worse ear is the one with the higher value HTL!

APHL may be age adjusted

Scale 7.1.6
2000 Hz



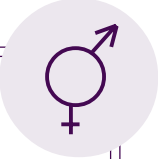
Values of percentage of loss of hearing corresponding to given hearing threshold levels in the better and worse ear at 2000 Hz

		HTL — Better ear																	
		≤15	20	25	30	35	40	45	50	55	60	65	70	75	80	85	90	≥95	
HTL - Worse ear	≤15	0.0																	
	20	0.3	0.5																
	25	0.5	0.7	1.1															
	30	0.7	1.0	1.5	2.1														
	35	1.0	1.4	1.9	2.5	3.4													
	40	1.3	1.7	2.2	2.9	3.8	4.8												
	45	1.5	1.9	2.5	3.3	4.1	5.1	6.1											
	50	1.7	2.2	2.8	3.5	4.4	5.3	6.3	7.3										
	55	1.9	2.4	3.0	3.7	4.6	5.5	6.4	7.4	8.4									
	60	2.0	2.5	3.1	3.9	4.7	5.6	6.6	7.5	8.5	9.4								
	65	2.1	2.6	3.3	4.0	4.9	5.7	6.7	7.6	8.6	9.6	10.5							
	70	2.2	2.7	3.4	4.1	5.0	5.9	6.8	7.8	8.7	9.7	10.7	11.6						
	75	2.3	2.8	3.5	4.3	5.1	6.0	6.9	7.9	8.9	9.9	10.8	11.8	12.7					
	80	2.4	2.9	3.6	4.4	5.2	6.1	7.0	8.0	9.0	10.0	11.0	12.0	12.9	13.6				
	85	2.4	3.0	3.7	4.4	5.3	6.1	7.1	8.1	9.1	10.1	11.1	12.1	13.0	13.8	14.3			
	90	2.5	3.1	3.8	4.5	5.3	6.2	7.1	8.1	9.1	10.2	11.2	12.2	13.2	13.9	14.4	14.8		
	≥95	2.6	3.2	3.8	4.6	5.4	6.2	7.1	8.1	9.1	10.2	11.3	12.3	13.2	14.0	14.5	14.8	15.0	
		≤15	20	25	30	35	40	45	50	55	60	65	70	75	80	85	90	≥95	

Note: the worse ear is the one with the *higher* value HTL!

APHL may be age adjusted

**Scale 7.1.7
3000 Hz**



Values of percentage of loss of hearing corresponding to given hearing threshold levels in the better and worse ear at 3000 Hz

		HTL — Better ear																
		≤15	20	25	30	35	40	45	50	55	60	65	70	75	80	85	90	≥95
HTL - Worse ear	≤15	0.0																
	20	0.2	0.3															
	25	0.3	0.5	0.7														
	30	0.5	0.7	1.0	1.4													
	35	0.7	0.9	1.2	1.7	2.3												
	40	0.8	1.1	1.5	2.0	2.5	3.2											
	45	1.0	1.3	1.7	2.2	2.7	3.4	4.1										
	50	1.1	1.4	1.9	2.3	2.9	3.5	4.2	4.8									
	55	1.2	1.6	2.0	2.5	3.0	3.6	4.3	4.9	5.6								
	60	1.3	1.7	2.1	2.6	3.1	3.7	4.4	5.0	5.6	6.3							
	65	1.4	1.8	2.2	2.7	3.2	3.8	4.4	5.1	5.7	6.4	7.0						
	70	1.5	1.8	2.3	2.8	3.3	3.9	4.5	5.2	5.8	6.5	7.1	7.7					
	75	1.5	1.9	2.3	2.8	3.4	4.0	4.6	5.2	5.9	6.6	7.2	7.8	8.4				
	80	1.6	2.0	2.4	2.9	3.4	4.0	4.7	5.3	6.0	6.6	7.3	8.0	8.6	9.1			
	85	1.6	2.0	2.5	3.0	3.5	4.1	4.7	5.4	6.0	6.7	7.4	8.1	8.7	9.2	9.5		
	90	1.7	2.1	2.5	3.0	3.5	4.1	4.7	5.4	6.1	6.8	7.5	8.2	8.8	9.2	9.6	9.8	
	≥95	1.7	2.1	2.6	3.0	3.6	4.1	4.7	5.4	6.1	6.8	7.5	8.2	8.8	9.3	9.6	9.8	10.0
		≤15	20	25	30	35	40	45	50	55	60	65	70	75	80	85	90	≥95

Note: the worse ear is the one with the higher value HTL!

APHL may be age adjusted

**Scale 7.1.8
4000 Hz**



Values of percentage of loss of hearing corresponding to given hearing threshold levels in the better and worse ear at 4000 Hz

		HTL — Better ear															
		≤20	25	30	35	40	45	50	55	60	65	70	75	80	85	90	≥95
HTL - Worse ear	≤20	0.0															
	25	0.2	0.3														
	30	0.3	0.5	0.8													
	35	0.5	0.7	1.0	1.5												
	40	0.6	0.9	1.3	1.8	2.5											
	45	0.8	1.1	1.5	2.1	2.7	3.5										
	50	0.9	1.3	1.7	2.3	2.9	3.6	4.4									
	55	1.0	1.4	1.9	2.4	3.1	3.8	4.5	5.2								
	60	1.2	1.5	2.0	2.6	3.2	3.9	4.6	5.3	6.0							
	65	1.2	1.6	2.1	2.7	3.3	3.9	4.6	5.3	6.0	6.7						
	70	1.3	1.7	2.2	2.7	3.4	4.0	4.7	5.4	6.1	6.8	7.5					
	75	1.4	1.8	2.3	2.8	3.4	4.1	4.8	5.5	6.2	6.9	7.6	8.2				
	80	1.4	1.9	2.3	2.9	3.5	4.2	4.9	5.6	6.3	7.0	7.7	8.4	8.9			
	85	1.5	1.9	2.4	3.0	3.6	4.2	4.9	5.7	6.4	7.1	7.8	8.5	9.0	9.5		
	90	1.6	2.0	2.5	3.0	3.6	4.3	5.0	5.7	6.5	7.2	7.9	8.6	9.1	9.5	9.8	
	≥95	1.6	2.0	2.5	3.1	3.7	4.3	5.0	5.7	6.5	7.2	8.0	8.7	9.2	9.6	9.8	10.0
			≤20	25	30	35	40	45	50	55	60	65	70	75	80	85	90

Note: the worse ear is the one with the higher value HTL!

**APHL may be
age adjusted**

Step 4: Make any necessary age adjustment.

Calculate the veteran's age (in completed years) at the date of the audiogram being used. For example, a veteran whose 67th birthday fell on the day after the audiogram was performed, was 66 on the date of the audiogram.

Determine the appropriate adjustment for presbycusis from Table 7.1.9.

Table 7.1.9 includes different values for both males and females and has separate columns for bilateral accepted hearing losses and for unilateral accepted hearing losses.

The value obtained from Table 7.1.9 is subtracted from the PLH.

The tabular format below shows how the work can be set out. The "adjustment for presbycusis" (obtained from Table 7.1.9) is to be subtracted from the APLH (obtained in Step 3). The result of this subtraction is the "age adjusted hearing loss".

Accepted Hearing Loss

FREQ (Hz)	Hearing Levels (dB)		Loss (%)
	Right	Left	
500			
1000			
1500			
2000			
3000			
4000			

APHL =

adjustment for presbycusis = from Table 7.1.9

age adjusted hearing loss =

PLH_B = Percentage bilateral loss of hearing due to age and is dependent upon both age and gender.

PLH_U = Percentage unilateral loss of hearing due to age and is dependent upon both age and gender.

**SCALE
7.1.9**



ADJUSTMENT FOR PRESBYACUSIS

Age (in years)	Bilateral		Unilateral	
	Males PLH _B (percent)	Females PLH _B (percent)	Males PLH _U (percent)	Females PLH _U (percent)
below 60	0	0	0	0
60	0	0	0	0
61	0.1	0	0	0
62	0.2	0	0	0
63	0.4	0	0.1	0
64	0.6	0	0.1	0
65	0.8	0	0.1	0
66	1.0	0	0.2	0
67	1.3	0	0.2	0
68	1.7	0	0.3	0
69	2.0	0	0.3	0
70	2.4	0	0.4	0
71	2.9	0	0.5	0
72	3.3	0	0.6	0
73	3.8	0	0.6	0
74	4.4	0.2	0.7	0
75	4.9	0.4	0.8	0.1
76	5.5	0.6	0.9	0.1
77	6.2	0.8	1.0	0.1
78	6.8	1.1	1.2	0.2
79	7.5	1.4	1.3	0.2
80	8.3	1.7	1.4	0.3
81	9.0	2.1	1.5	0.4
82	9.8	2.5	1.7	0.4
83	10.7	2.9	1.8	0.5
84	11.5	3.4	2.0	0.6
85	12.5	3.9	2.1	0.7
above 85	12.5	3.9	2.1	0.7

**This is a table
for making age
adjustment**

(The adjustments for presbycusis in Table 7.1.9 have been modified from the adjustments provided by the National Acoustic Laboratories.)

“Age” means the veteran’s age in completed years at the date of the audiogram.

The “Bilateral” column applies if there is accepted hearing loss in both ears.

The “Unilateral” column applies if there is accepted hearing loss in only one ear.

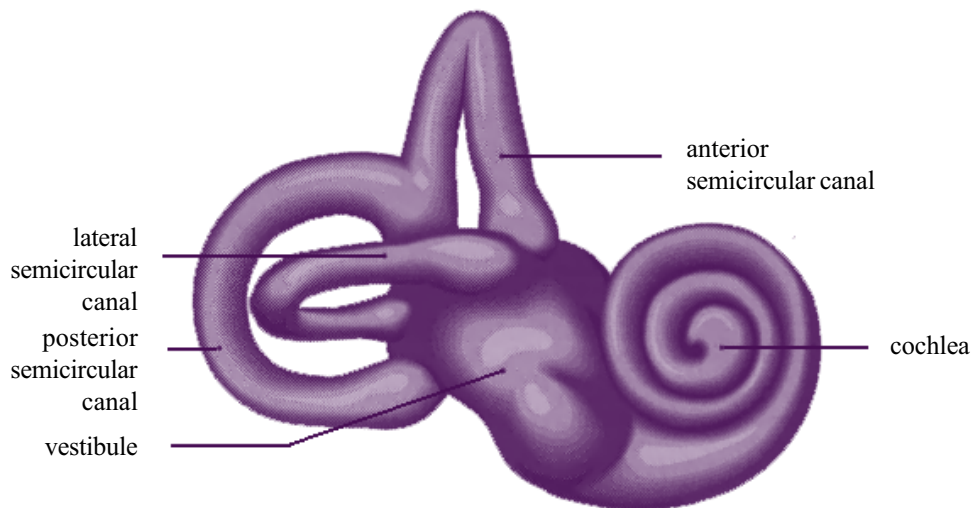
Step 5: Determine the impairment rating for the accepted hearing loss using formula 7.1.

Formula 7.1— Loss of function: Hearing

$$\text{Impairment rating} = \frac{\text{age adjusted hearing loss}}{2}$$

Results from Formula 7.1 are to be rounded to the nearest integer (whole number). Thus 2.4 would be rounded to 2, and 2.6 would be rounded to 3. If the calculation gives an answer exactly half way between two integers, the answer is rounded up, for example 2.5 is to be rounded to 3.

If the paired organs policy (see page 148) does not apply, Formula 7.1 gives the final impairment rating for loss of hearing. To determine whether the paired organs policy applies, proceed to Step 6.



Step 6. Determine if the paired organs policy applies. If it applies, calculate the adjusted impairment rating.

Use Table 7.1.10 to determine if the paired organs policy applies.

**Procedural
Table 7.1.10**



PAIRED ORGANS POLICY

Accepted Hearing Loss		Does the Paired Organs Policy apply?
Type 1	Bilateral mixed deafness	No
Type 2	Right mixed deafness	Yes
Type 3	Left mixed deafness	Yes
Type 4	<i>Bilateral sensorineural deafness</i>	<i>No</i>
Type 5	Bilateral sensorineural deafness with right conductive deafness	No
Type 6	Bilateral sensorineural deafness with left conductive deafness	No
Type 7	Bilateral conductive deafness	No
Type 8	Bilateral conductive deafness with right sensorineural deafness	No
Type 9	Bilateral conductive deafness with left sensorineural deafness	No
Type 10	Left conductive deafness with right sensorineural deafness	No
Type 11	Right conductive deafness with left sensorineural deafness	No
Type 12	Right conductive deafness	Yes
Type 13	Right sensorineural deafness	Yes
Type 14	Left sensorineural deafness	Yes
Type 15	Left conductive deafness	Yes

No age adjustment permitted for this table

The paired organs policy is to be applied by doubling the impairment rating for the age-adjusted PLH for the accepted hearing loss and comparing that with the impairment rating equivalent to the total bilateral hearing loss. The lesser of the two is to be taken as the impairment rating (adjusted for the paired organs policy) for the accepted hearing loss.

The paired organ policy is the subject of Chapter 21.

TINNITUS

Tinnitus is to be assessed if:

- ◆ tinnitus is an accepted condition in its own right; *or*
- ◆ tinnitus is present and any of the fifteen types of hearing loss is an accepted condition for the ear in which tinnitus is present.

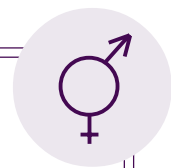
Tinnitus is *not* to be assessed when it is a rejected condition.

Irrespective of whether there are any non-accepted conditions contributing to the tinnitus, the rating is *not* to be moderated by applying Chapter 19 (Partially Contributing Impairment).

If impairment ratings are obtained for hearing loss and tinnitus both are to be included in the final combining of all impairment ratings by applying Chapter 18 (Combined Values Chart).

To assess tinnitus, make the appropriate selection from Table 7.1.11 below.

**Functional Loss
Table 7.1.11**



TINNITUS

Impairment Ratings	Criteria
NIL	No tinnitus or occasional tinnitus.
TWO	Very mild tinnitus: not present every day.
FIVE	Tinnitus every day, but tolerable for much of the time.
TEN	Severe tinnitus, eg of similar severity to that requiring a masking device, present every day.
FIFTEEN	V distraction, loss of concentration and extreme discomfort, and regularly interfering with sleep.

Only one rating is to be selected from this table for any condition or combination of conditions. If more than one rating is applicable, the higher rating is to be selected.

No age adjustment permitted for this table

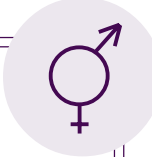
PART 7.2: EAR, NOSE, AND THROAT

The three tables in this Part are all Other Impairment tables.

Impairment of speech is to be assessed by applying Chapter 5 (Neurological Impairment).

Loss of balance is commonly paroxysmal and is usually best rated by applying Chapter 15 (Intermittent Impairment).

Loss of taste and loss of smell are to be assessed by applying Chapter 5 (Neurological Impairment).

Other Impairment Table 7.2.1		
EARS		
Impairment Ratings	Criteria	
NIL	Intermittent otalgia, intermittent otorrhoea, or both.	
TWO	Otitis externa.	
FIVE	<ul style="list-style-type: none"> • Otolgia every day, but tolerable for much of the time. • Continuous otorrhoea. 	
TEN	Frequent severe otalgia.	
<i>Only one rating is to be selected from this table for any condition or combination of conditions.</i>		

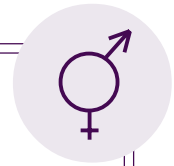
No age adjustment permitted for this table

If accepted conditions affect both ears, they are to be rated together and only a single rating is to be given for them.

Chapter 15 (Intermittent Impairment) may be applied for more severe or frequent aural conditions.

UPPER RESPIRATORY TRACT AND NASAL CONDITIONS

Other Impairment Table 7.2.2



UPPER RESPIRATORY TRACT AND NASAL CONDITIONS

Impairment Ratings	Criteria
NIL	Intermittent post-nasal discharge, rhinorrhoea and/or sneezing.
TWO	Recurrent upper respiratory tract infection.
FIVE	Symptoms of rhinitis and sinusitis or both which are not relieved by medication and which occur for more than 4 months every year.

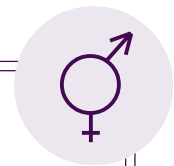
Only one rating is to be selected from this table for any condition or combination of conditions.

No age adjustment permitted for this table

Chapter 15 (Intermittent Impairment) may be applied for upper respiratory tract and nasal conditions which are sufficiently severe or frequent.

THROAT

Other Impairment Table 7.2.3



THROAT

Impairment Ratings	Criteria
NIL	No tracheostomy.
TWO	A tracheostomy that has been closed.
TWENTY	Permanent tracheostomy.

No age adjustment permitted for this table

Index to Hearing Impairment Worksheets

Type No	Total accepted hearing loss	Worksheet Numbers	
		Air alone	Air & Bone
1	Bilateral mixed deafness	2	N/A
2	Right mixed deafness	3	N/A
3	Left mixed deafness	3	N/A
4	Bilateral sensorineural deafness	SND	SND
5	Bilateral sensorineural deafness with Right conductive deafness	2	N/A
6	Bilateral sensorineural deafness with Left conductive deafness	2	N/A
7	Bilateral conductive deafness	2	4
8	Bilateral conductive deafness with Right sensorineural deafness	2	N/A
9	Bilateral conductive deafness with Left sensorineural deafness	2	N/A
10	Left conductive deafness with Right sensorineural deafness	2	NWP
11	Right conductive deafness with Left sensorineural deafness	2	NWP
12	Right conductive deafness	3	5
13	Right sensorineural deafness	3	NWP
14	Left sensorineural deafness	3	NWP
15	Left conductive deafness	3	5

SND = sensorineural deafness
N/A = not applicable
NWP = no worksheet provided

The Type Numbers in the left hand column refer to types of accepted hearing loss as defined in Table 7.1.1 of the *Guide*.



Hearing Impairment Worksheet (SND)

File No:

Veteran's given names:

Veteran's surname:

Condition(s) accepted for assessment:

Accepted hearing loss is equivalent to:

Bilateral Sensorineural Deafness

Date of audiogram:

Veteran's age at date of audiogram: years

Accepted Hearing Loss (Air or Bone Conduction) as indicated below:

Using **Air** (*) conduction figures Using **Bone** conduction figures

FREQ (Hz)	Hearing Levels (dB)		Loss (%)
	Right	Left	
500			
1000			
1500			
2000			
3000			
4000			

Accepted hearing loss: = A

Correction for presbycusis: = B

Accepted hearing loss (less age correction): = A - B

Accepted hearing impairment:

NOTE:

This form is to be used for assessment of **Type 4 hearing loss** (Bilateral sensorineural deafness).

***If bone conduction figures have not been used, state reason:**

Signature	Name <i>(please print)</i>	Date/...../.....
-----------	----------------------------	---------------------------



Hearing Impairment Worksheet (2)

File No:

Veteran's given names:

Veteran's surname:

Condition(s) accepted for assessment:

Accepted hearing loss is equivalent to: TYPE No.*:

Date of audiogram:

Veteran's age at date of audiogram: years

Accepted Hearing Loss (Air Conduction)

FREQ (Hz)	Hearing Levels (dB)		Loss (%)
	Right	Left	
500			
1000			
1500			
2000			
3000			
4000			

Accepted percentage hearing loss (APHL):

Adjustment for presbycusis:

APHL (less adjustment for presbycusis):

Accepted hearing impairment:

*** NOTE:**

This form is to be used for assessment of the following types of hearing loss:

Type 1 (Bilateral mixed hearing loss)

Type 8 (Bilateral conductive deafness with right sensorineural hearing loss)

Type 9 (Bilateral conductive deafness with left sensorineural hearing loss)

and when bone conduction figures are not being used, for types 7, 10 and 11.

***If hearing loss is type 7, 10 or 11, state why bone conduction figures have not been used.**

Signature	Name (please print)	Date/...../.....
-----------	---------------------	---------------------------



Hearing Impairment Worksheet (3)

File No:

Veteran's given names:

Veteran's surname:

Condition(s) accepted for assessment:

Accepted hearing loss is equivalent to: TYPE No.*:

Date of audiogram:

Veteran's age at date of audiogram: years

Accepted Hearing Loss (Air Conduction)

FREQ (Hz)	Hearing Levels (dB)		Loss (%)
	Right	Left	
500			
1000			
1500			
2000			
3000			
4000			

Accepted percentage hearing loss (APHL):

Adjustment for presbycusis:

APHL (less adjustment for presbycusis):

Accepted hearing impairment:

Total Hearing Loss (Air Conduction)

FREQ (Hz)	Hearing Levels (dB)		Loss (%)
	Right	Left	
500			
1000			
1500			
2000			
3000			
4000			

Total bilateral hearing loss:

Total hearing impairment:

Paired organs policy

Under the paired organs policy, the final hearing impairment is the lesser of twice the accepted hearing impairment and the total hearing impairment:

Final hearing impairment:

***If bone conduction figures not used for types 12, 13, 14, or 15, state reason:**

Signature	Name (please print)	Date / /
-----------	---------------------	-------------------------------



Hearing Impairment Worksheet (4)

File No:

Veteran's given names:

Veteran's surname:

Condition(s) accepted for assessment:

Accepted hearing loss is equivalent to:

Bilateral Conductive Deafness

Date of audiogram:

Veteran's age at date of audiogram: years

Accepted Hearing Loss

AIR CONDUCTION

FREQ (Hz)	Hearing Levels		Loss (%)
	Right	Left	
500			
1000			
1500			
2000			
3000			
4000			

BONE CONDUCTION

FREQ (Hz)	Hearing Levels		Loss (%)
	Right	Left	
500			
1000			
1500			
2000			
3000			
4000			

Hearing loss (Air): A

Hearing loss (Bone): B

Use formula to calculate loss due to bilateral conductive deafness

$$\text{Conductive PLH} = \frac{(A - B) \times 100}{100 - B}$$

WORKING:

A =

100 =

B =

B =

A - B =

100 - B = = D

(A - B) x 100 = = C

Conductive hearing loss is C divided by D =

(Using formula 7.1) Accepted hearing impairment:

Signature	Name (please print)	Date/...../.....
-----------	---------------------	---------------------------



Hearing Impairment Worksheet (5)

File No:

Veteran's given names:

Veteran's surname:

Condition(s) accepted for assessment:

Accepted hearing loss is equivalent to:

Date of audiogram:

Accepted Hearing Loss

AIR CONDUCTION

FREQ (Hz)	Hearing Levels		Loss (%)
	Right	Left	
500			
1000			
1500			
2000			
3000			
4000			

Hearing loss (Air):

Use formula to calculate →

$$\text{Conductive PLH} = \frac{(A - B) \times 100}{100 - B}$$

A =

B =

A - B =

(A - B) x 100 = = C

100 =

B =

100 - B = = D

= E

= F

Paired organs policy

Under the paired organs policy, the final hearing impairment is the lesser of twice the accepted hearing impairment and the total hearing impairment:

BONE CONDUCTION

FREQ (Hz)	Hearing Levels		Loss (%)
	Right	Left	
500			
1000			
1500			
2000			
3000			
4000			

Hearing loss (Bone):

Accepted hearing loss: = E

Accepted hearing impairment: = F

Total Hearing Loss

AIR CONDUCTION

FREQ (Hz)	Hearing Levels		Loss (%)
	Right	Left	
500			
1000			
1500			
2000			
3000			
4000			

Total hearing loss:

Total hearing impairment:

Final hearing impairment:

Signature	Name (<i>please print</i>)	Date/...../.....
-----------	------------------------------	---------------------------